

Directly integrating your Zurich risk and insurance information

Zurich API* Connector Solution

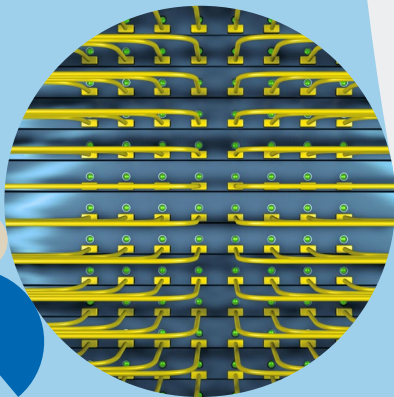
We can help you leverage your risk and insurance data more efficiently while complying with increasing regulation.

The increase in available data has created new opportunities for your business around loss prevention, risk transfer and total cost of risk. However, these opportunities must be balanced with the need to comply with increasing regulation and new risks.

An integrated, digital approach can give you the transparency and control you need to handle your risk management and insurance data effectively and efficiently. To achieve this, you can now directly connect your risk management system, placement or servicing platform using Zurich Connector API Solution.

Let's connect with seamless data sharing in real time to help you leverage your data more efficiently

*Application Programming Interface



The benefits of Zurich Connector API Solution

Instantly available data

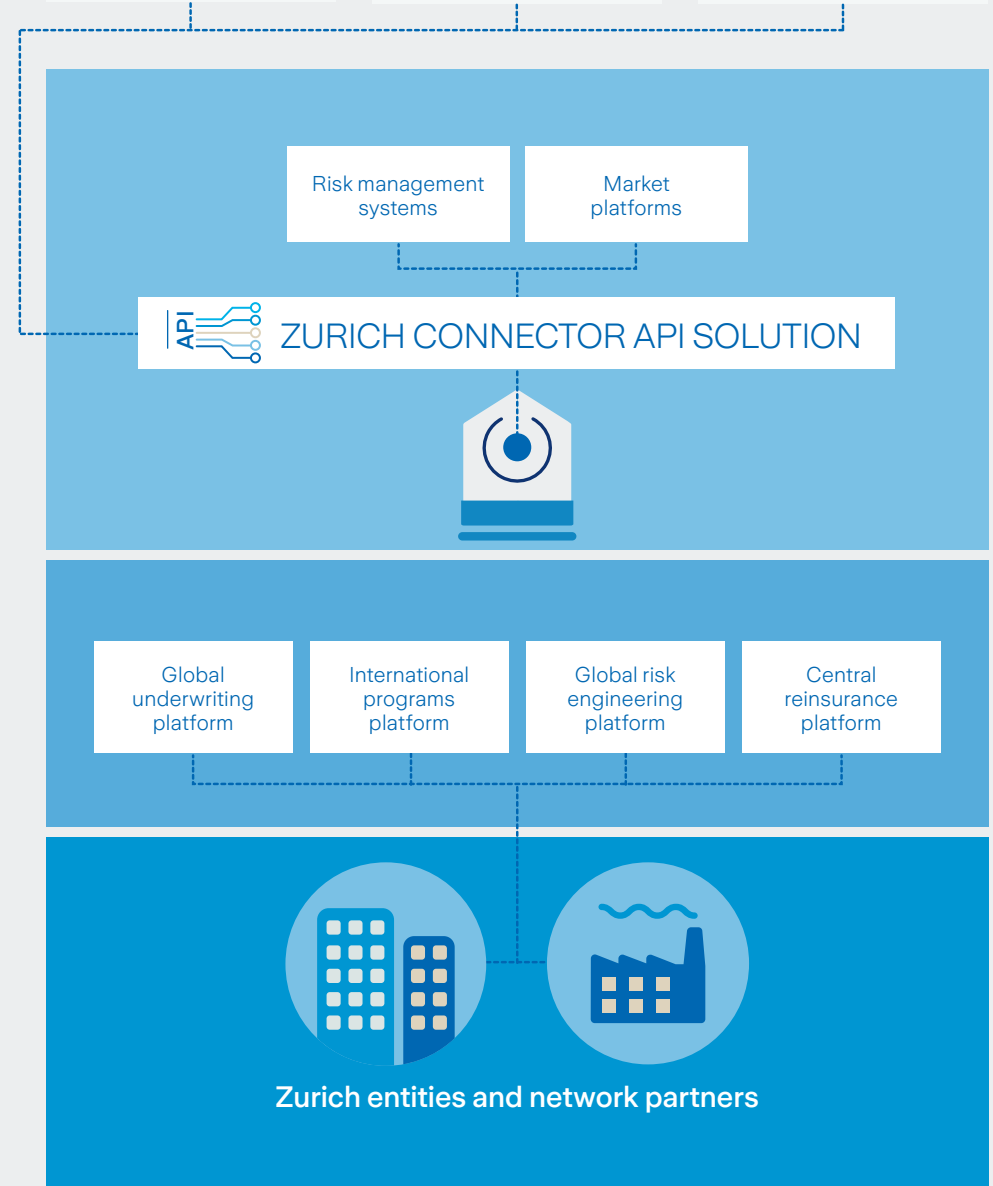
Data is consistently **'flowing'** from Zurich operational systems in **real-time** directly into customer's / broker's risk management system

Consistency & transparency

Latest status of insurance and risk engineering data is instantly available **in your system** and in sync with Zurich

Efficiencies in administration

No more re-keying manual uploads or cumbersome reconciliations



What data is available?

Policy admin	<p>Program Policies Premium payments Policy documents Property location exposure*</p> <p>Life and Non-Life data</p> <p>* supports also bidirectional exchange</p>
Claims	<p>Claims Claims bookings Claim reserves Claims documents</p> <p>Life and Non-Life data</p>
Risk engineering	<p>Location Loss scenarios Risk improvement actions* Visit schedules Risk engineering documents</p> <p>* supports also bidirectional updates</p>
Captive	<p>Captive premium Captive claims Captive documents</p>

What our customers say



My wish for collaborating with insurance carriers in future must include technically an automated data exchange... An API to the insurance data... would lead to efficiency gains and cost savings. Error prone manual data transfers or misinterpretations would be minimized.

Marcus Reichel,
Global Head Insurance Management, Knauf



In the past we have spent numerous hours gathering, sending and sorting data. With API we no longer need to clean the data. Instead, it automatically feeds into our risk management system in real time. We can then, without a time-consuming exercise, share accurate data with various stakeholders.

Tomas Andersson
Managing Director Volvo Cars Insurance



With API, almost all risk engineering data points are integrated into our risk management information system. I am now able to click a button and easily run a report with our most up-to-date risk engineering visits. We also track our claims within our RMIS, so we are able to easily cross reference risk engineering visits and improvement actions to claims activities.

Casey Markovic
Manager Risk Management, Prologis



Make the connection

To find out more about Zurich API Connector Solution and how it could work for your business, please [click here](#) or contact your local Zurich representative.





This document has been prepared by Zurich Insurance Group Ltd and the opinions expressed therein are those of Zurich Insurance Group Ltd as of the date of the release and are subject to change without notice. This document has been produced solely for informational purposes. All information contained in this document has been compiled and obtained from sources believed to be reliable and credible but no representation or warranty, express or implied, is made by Zurich Insurance Group Ltd or any of its subsidiaries (the 'Group') as to their accuracy or completeness. This document is not intended to be legal, underwriting, financial, investment or any other type of professional advice. The Group disclaims any and all liability whatsoever resulting from the use of or reliance upon this document. Certain statements in this document are forward-looking statements, including, but not limited to, statements that are predictions of or indicate future events, trends, plans, developments or objectives. Undue reliance should not be placed on such statements because, by their nature, they are subject to known and unknown risks and uncertainties and can be affected by numerous unforeseeable factors. The subject matter of this document is also not tied to any specific insurance product nor will it ensure coverage under any insurance policy. This document may not be distributed or reproduced either in whole, or in part, without prior written permission of Zurich Insurance Group Ltd, Mythenquai 2, 8002 Zurich, Switzerland. Neither Zurich Insurance Group Ltd nor any of its subsidiaries accept liability for any loss arising from the use or distribution of this document. This document does not constitute an offer or an invitation for the sale or purchase of securities in any jurisdiction.

Zurich Insurance Group

PO505556 (05/23) TCL